



Certificate of Analysis

QA SAMPLE - INFORMATIONAL ONLY

1 of 3

ICAL ID: 20220624-124 Sample:
CA220624-023-173
Smocking Dog Pomegranate Gummies
Strain: Pomegranate Gummies
Category: Ingestible

CBD Living
Lic. #
None
San Diego, CA 92121

Lic. #

Batch#: 23901
Batch Size Collected:
Total Batch Size:
Collected: 11/18/2022; Received: 11/18/2022
Completed: 11/18/2022

Moisture NT Water Activity NT	$\Delta 9$ -THC 4.14 mg/unit	CBD 22.69 mg/unit	Total Cannabinoids 29.38 mg/unit	Total Terpenes NT
--	--	-----------------------------	--	----------------------

Summary	SOP Used	Date Tested	
Batch Cannabinoids	POT-PREP-002	06/27/2022	Complete Complete



Cannabinoid Profile

1 Unit = gummy, 5.44 g.

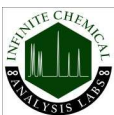
Analyte	LOQ (mg/g)	LOD (mg/g)	%	mg/g	mg/unit	Analyte	LOQ (mg/g)	LOD (mg/g)	%	mg/g	mg/unit
THCa	0.0128	0.0043	ND	ND	ND	CBDV	0.0046	0.0004	0.006	0.06	0.32
$\Delta 9$ -THC	0.0046	0.0010	0.076	0.76	4.14	CBN	0.0046	0.0005	ND	ND	ND
$\Delta 8$ -THC	0.0046	0.0014	0.008	0.08	0.41	CBGa	0.0046	0.0015	ND	ND	ND
THCV	0.0046	0.0006	ND	ND	ND	CBG	0.0046	0.0005	0.017	0.17	0.94
CBDa	0.0049	0.0016	ND	ND	ND	CBC	0.0076	0.0025	0.016	0.16	0.88
CBD	0.0046	0.0008	0.417	4.17	22.69	Total THC			0.08	0.76	4.14
						Total CBD			0.42	4.17	22.69
						Total			0.54	5.40	29.38

Total THC=THCa * 0.877 + $\Delta 9$ -THC; Total CBD = CBDa * 0.877 + CBD. LOD= Limit of Detection, LOQ= Limit of Quantitation, ND= Not Detected, NR= Not Reported. Potency is reported on a dry weight basis. Instrumentation and analysis SOPs used: Cannabinoids:UHPLC-DAD(POT-INST-005),Moisture:Moisture Analyzer(MOISTURE-001),Water Activity:Water Activity Meter(WA-INST-002), Foreign Material:Microscope(FOREIGN-001). Density measured at 19-24 °C, Water Activity measured at 0-90% RH. All QA submitted by the client, All CA State Compliance sampled usingSAMPL-SOP-001.

Terpene Profile

Analyte	LOQ (mg/g)	LOD (mg/g)	%	mg/g	Analyte	LOQ (mg/g)	LOD (mg/g)	%	mg/g
---------	------------	------------	---	------	---------	------------	------------	---	------

NR= Not Reported (no analysis was performed), ND= Not Detected (the concentration is less then the Limit of Detection (LOD)). Analytical instrumentation used: HS-GC-MS; samples analyzed according to SOP TERP-INST-003.



Infinite Chemical Analysis Labs
8312 Miramar Mall
San Diego, CA
(858) 623-2740
www.inhniteCAL.com
Lic# C8-0000047-LIC

Josh M Swider

Josh Swider
Lab Director, Managing Partner
11/18/2022

Confident Cannabis
All Rights Reserved
support@conhdentcannabis.com
(866) 506-5866
www.conhdentcannabis.com



This product has been tested by Infinite Chemical Analysis, LLC using valid testing methodologies and a quality system as required by state law. All LQC samples were performed and met the prescribed acceptance criteria in 16 CCR section 15730, pursuant to 16 CCR section 15726(e)(13). Values reported relate only to the product tested. Infinite Chemical Analysis, LLC makes no claims as to the efficacy, safety or other risks associated with any detected or non-detected levels of any compounds reported herein. This Certificate shall not be reproduced except in full, without the written approval of Infinite Chemical Analysis, LLC.



Certificate of Analysis

QA SAMPLE - INFORMATIONAL ONLY

2 of 3

ICAL ID: 20220624-124 Sample:
CA220624-023-173
Smocking Dog Pomegranate Gummies
Strain: Pomegranate Gummies
Category: Ingestible

CBD Living
Lic. #
None
San Diego, CA 92121

Lic. #

Batch#: 23901
Batch Size Collected:
Total Batch Size:
Collected: 11/18/2022; Received: 11/18/2022
Completed: 11/18/2022

Residual Solvent Analysis

Category 1	LOQ	LOD	Limit	Status	Category 2	LOQ	LOD	Limit	Status	Category 2	LOQ	LOD	Limit	Status
------------	-----	-----	-------	--------	------------	-----	-----	-------	--------	------------	-----	-----	-------	--------

NR= Not Reported (no analysis was performed), ND= Not Detected (the concentration is less then the Limit of Detection (LOD)). Analytical instrumentation used: HS-GC-MS; samples analyzed according to SOP RS-INST-003.

Heavy Metal Screening

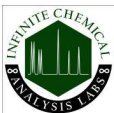
	LOQ	LOD	Limit	Status
--	-----	-----	-------	--------

NR= Not Reported (no analysis was performed), ND= Not Detected (the concentration is less then the Limit of Detection (LOD)). Analytical instrumentation used: ICP-MS; samples analyzed according to SOP HM-INST-003.

Microbiological Screening

	Limit	Result	Status
--	-------	--------	--------

ND=Not Detected. Analytical instrumentation used:qPCR; samples analyzed according to SOP MICRO-INST-001.



Infinite Chemical Analysis Labs
8312 Miramar Mall
San Diego, CA
(858) 623-2740
www.inhniteCAL.com
Lic# C8-0000047-LIC

Josh M Swider

Josh Swider
Lab Director, Managing Partner
11/18/2022

Confident Cannabis
All Rights Reserved
support@conhdentcannabis.com
(866) 506-5866
www.conhdentcannabis.com



This product has been tested by Infinite Chemical Analysis, LLC using valid testing methodologies and a quality system as required by state law. All LQC samples were performed and met the prescribed acceptance criteria in 16 CCR section 15730, pursuant to 16 CCR section 15726(e)(13). Values reported relate only to the product tested. Infinite Chemical Analysis, LLC makes no claims as to the efficacy, safety or other risks associated with any detected or non-detected levels of any compounds reported herein. This Certificate shall not be reproduced except in full, without the written approval of Infinite Chemical Analysis, LLC.



Certificate of Analysis

QA SAMPLE - INFORMATIONAL ONLY

3 of 3

ICAL ID: 20220624-124 Sample:
CA220624-023-173
Smocking Dog Pomegranate Gummies
Strain: Pomegranate Gummies
Category: Ingestible

CBD Living
Lic. #
None
San Diego, CA 92121

Lic. #

Batch#: 23901
Batch Size Collected:
Total Batch Size:
Collected: 11/18/2022; Received: 11/18/2022
Completed: 11/18/2022

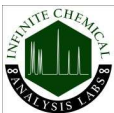
Chemical Residue Screening

Category 1	LOQ	LOD	Status	Mycotoxins	LOQ	LOD	Limit	Status
------------	-----	-----	--------	------------	-----	-----	-------	--------

Category 2	LOQ	LOD	Limit	Status	Category 2	LOQ	LOD	Limit	Status
------------	-----	-----	-------	--------	------------	-----	-----	-------	--------

Other Analyte(s):

NR= Not Reported (no analysis was performed), ND= Not Detected (the concentration is less then the Limit of Detection (LOD)). Analytical instrumentation used: LC-MS-MS & GC-MS-MS; samples analyzed according to SOPs PESTMYCO-LC-INST-004 and PEST-GC-INST-003.



Infinite Chemical Analysis Labs
8312 Miramar Mall
San Diego, CA
(858) 623-2740
www.inhniteCAL.com
Lic# C8-000047-LIC

Josh M Swider

Josh Swider
Lab Director, Managing Partner
11/18/2022

Confident Cannabis
All Rights Reserved
support@conhdentcannabis.com
(866) 506-5866
www.conhdentcannabis.com



This product has been tested by Infinite Chemical Analysis, LLC using valid testing methodologies and a quality system as required by state law. All LQC samples were performed and met the prescribed acceptance criteria in 16 CCR section 15730, pursuant to 16 CCR section 15726(e)(13). Values reported relate only to the product tested. Infinite Chemical Analysis, LLC makes no claims as to the efficacy, safety or other risks associated with any detected or non-detected levels of any compounds reported herein. This Certificate shall not be reproduced except in full, without the written approval of Infinite Chemical Analysis, LLC.