

CERTIFICATE OF ANALYSIS



Order #: 32471
 Order Name: CBD Living
 Freeze
 Batch#:
 Received: 06/21/2019
 Completed: 06/25/2019



Water for Living, LLC
 705 E Harrison ST
 Corona CA, 92881
 (195) 180-8315
 nancy@cbdliving.com



Sample



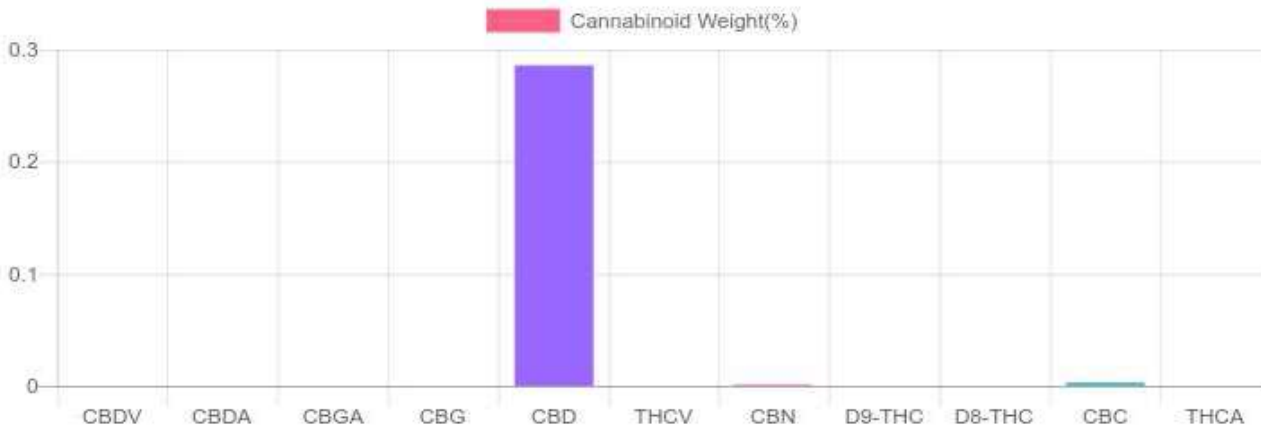
N/D
D9-THC

0.286%
Total CBD

Cannabinoids Test

GSL SOP 400 PREPARED: 06/24/2019 21:25:51 UPLOADED: 06/25/2019 15:30:58

cannabinoids		weight(%)	mg/g
DELTA-9-TETRAHYDROCANNABINOL	D9-THC	N/D	N/D
TETRAHYDROCANNABINOLIC ACID	THCA	N/D	N/D
CANNABIDIOL	CBD	0.286%	2.860
CANNABIDIOLIC ACID	CBDA	N/D	N/D
CANNABIDIVARIN	CBDV	N/D	N/D
CANNABICHRMENE	CBC	0.003%	0.026
CANNABINOL	CBN	0.001%	0.007
CANNABIGEROL	CBG	N/D	N/D
CANNABIGEROLIC ACID	CBGA	N/D	N/D
DELTA-8-TETRAHYDROCANNABINOL	D8-THC	N/D	N/D
TETRAHYDROCANNABIVARIN	THCV	N/D	N/D
TOTAL D9-THC		N/D	N/D
TOTAL CBD*		0.286%	2.860
TOTAL CANNABINOIDS		0.290%	2.893



Reporting Limit 10 ppm
 *Total CBD = CBD + CBDA x 0.877
 N/D - Not Detected, B/LOQ - Below Limit of Quantification

Notes

254.5mg cannabinoids per 88mL



4001 SW 47th Avenue Suite 207
 Davie, FL 33314
 1-833-TEST-CBD
 info@greenscientificlabs.com



Dylan Swart
 Dylan Swart, Lab Director

Green Scientific Labs uses its best efforts to deliver high quality results and to verify that the data contained therein are based on sound scientific judgment and levels listed are guidelines only and all data was reported based on standard laboratory procedures and deviations. However Green Scientific Labs makes no warranties or claims to that effect and further shall not be liable for any damage or misrepresentation that may result from the use or misuse of the data contained herein in any way. Further, Green Scientific Labs makes no claims regarding representations of the analyzed sample to the larger batch from which it was taken. Data and information in this report are intended solely for the individual(s) for whom samples were submitted and as part of our strict confidentiality policy, Green Scientific Labs can only discuss results with the original client of record.